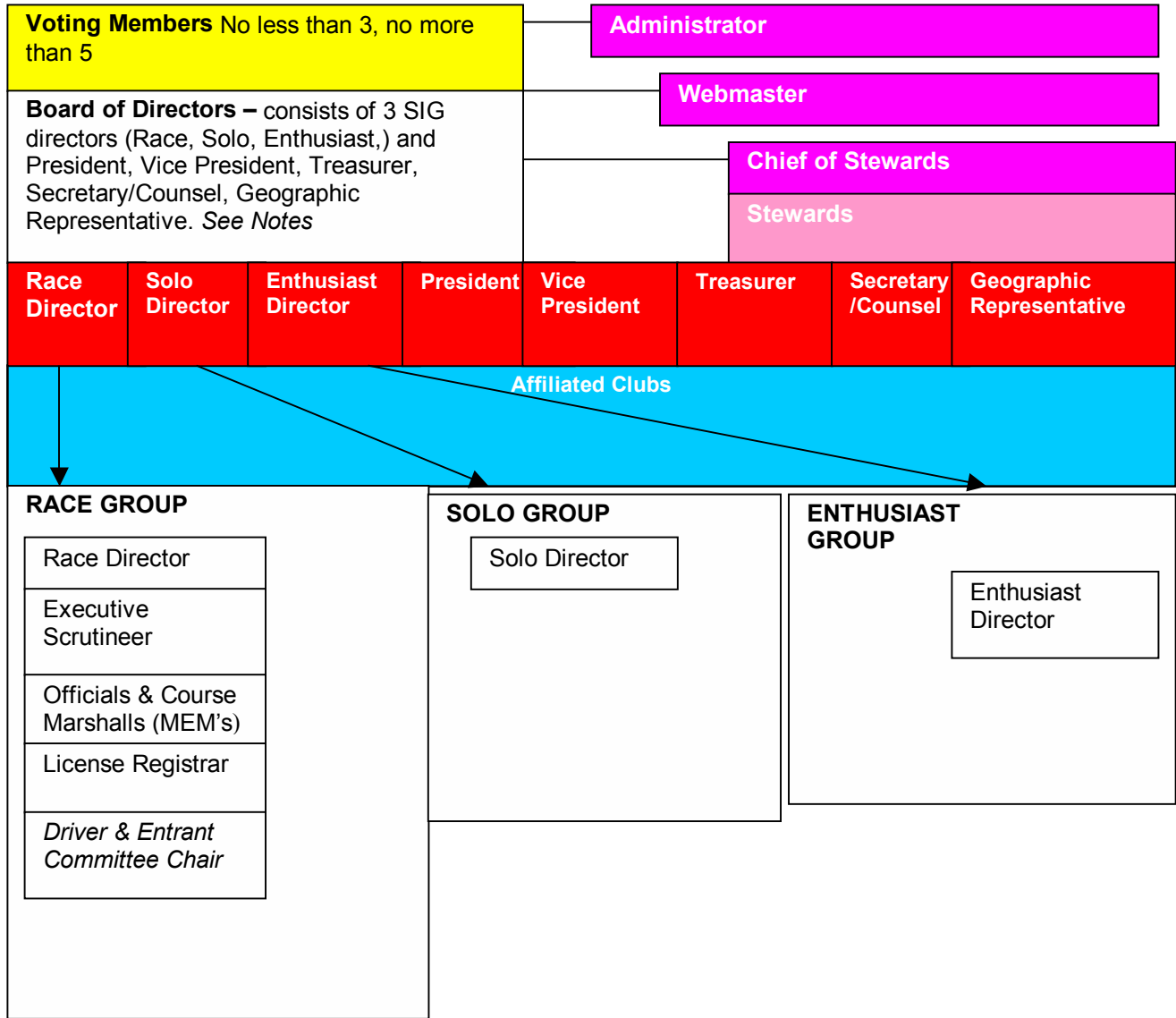


**WCMA ORGANIZATION CHART – 2001 November –Draft 2**



## Notes

- **Yellow** Indicates Voting Members. Voting Members may or may not be members of the Board. In general, it is preferred that the Vice President and Treasurer are Voting Members. The President must be a Voting Member.
- **Red** indicates Board Members. All SIG directors are board members. The position of Secretary/(legal)Counsel can be split. Legal Counsel, if split, does not have to be a Board position.
- **Geographic (or Territory) Representative** applies in the case of significant Board and SIG representation located in one province of WCMA's jurisdiction. This person would be responsible for representing the interests of all SIGs and Member Clubs within provinces outside of the majority of residence of the WCMA's Board of Directors. Should Board representation be evenly divided, this position does not need to be filled.
- **Purple** indicates positions which report to the Voting Members. These positions are not Board or Voting Member positions, however, due to the importance of the duties assigned to these positions, report directly to the Voting Members.
- **Blue** indicates Affiliated Clubs. Affiliated clubs are the base of WCMA. WCMA can only grant sanction for events, or licenses for drivers and officials, to members of WCMA-affiliated clubs.
- **SIGS** are headed by their respective SIG director, who is on the Board of WCMA. Within each SIG, various directors and executive are appointed to subcommittees as required. A sample for race is included.